

FEATURES

- Specially designed for heavy duty electrical equipment
- Two piece connector with tuning fork receptacle contacts and blade type contacts
- End screws provide easy mating and unmating
- RoHS compliance

SPECIFICATIONS

- Current Rating : 5A per contact
- Contact Resistance : 16mΩ max.
- Dielectric Withstanding Voltage : 2000V AC for 1minute
- Insulation Resistance : 5,000MΩ min. at 500V DC
- Insertion Force : 454g max. / pair Cont.
- Withdrawal Force : 57g min. / pair Cont.

MATERIAL

- Insulator : Glass-Filled P.B.T.(UL94V-0),Black
- Contact : Copper Alloy,
- Plating : Gold over Nickel

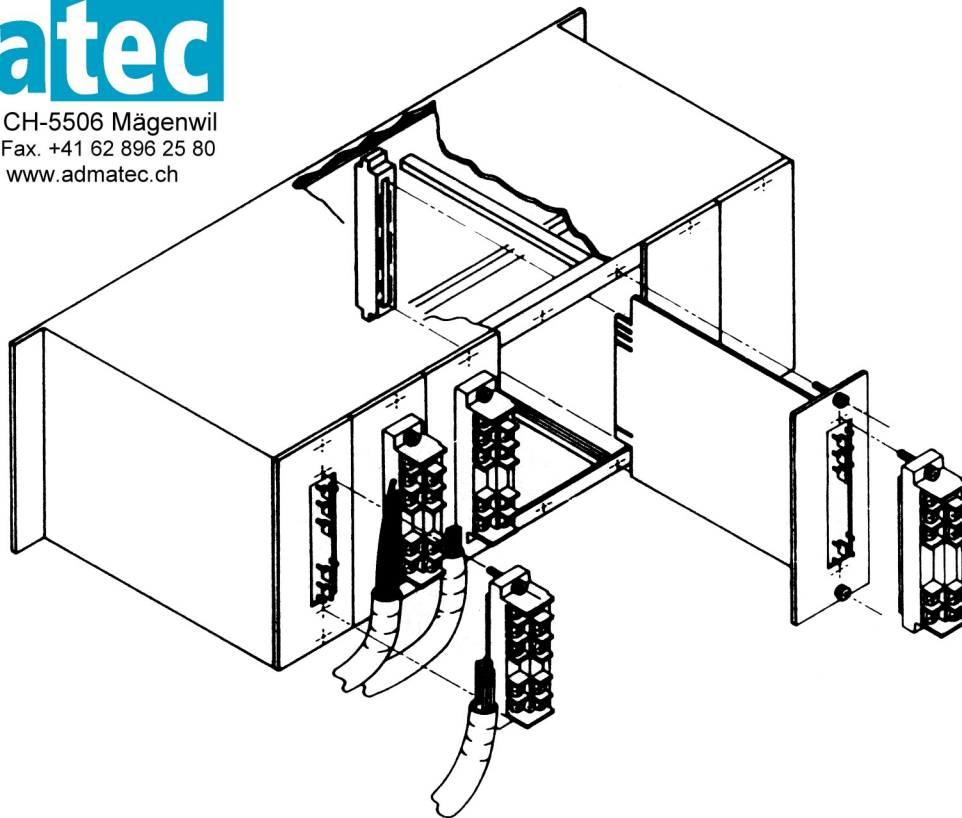
ORDER CODE

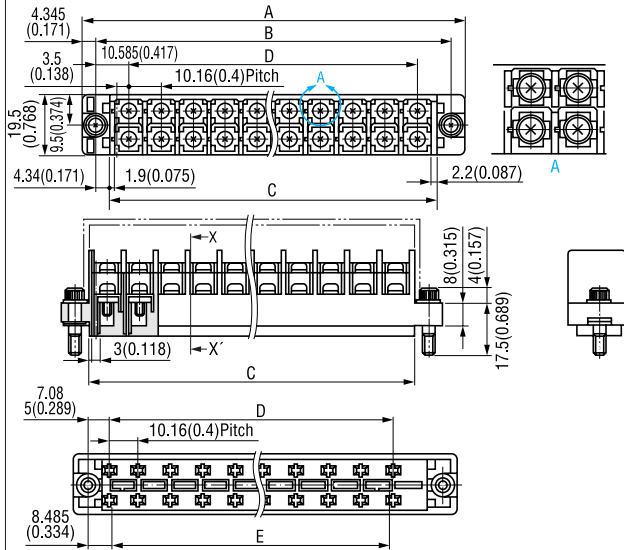
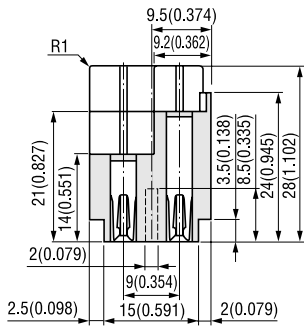
70 - - - - **F**

- Series name
7010,7030 : Receptacle
7011,7032 : Plug
- No,of contact
012 : 12pin
020 : 20pin
036 : 36pin
- Contact name
160 : Receptacle
161 : Header(Right angle)
163 : Header(Straight)
- Angle direction
R : Right
L : Left
※ Applicable only to #161 contact
- F : RoHS Compliance

admatec

Schareggstrasse 3, CH-5506 Mägenwil
Tel. +41 62 896 00 48, Fax. +41 62 896 25 80
info@admatec.ch, www.admatec.ch

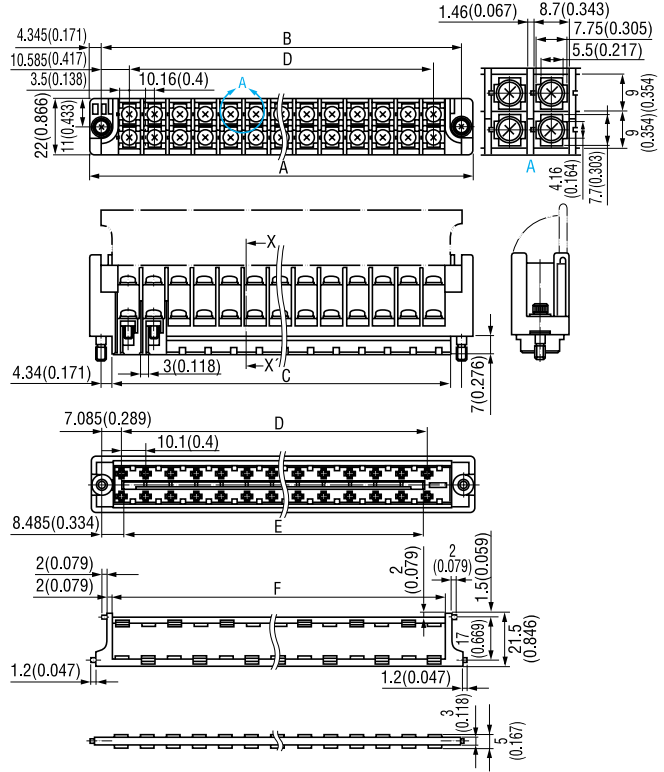
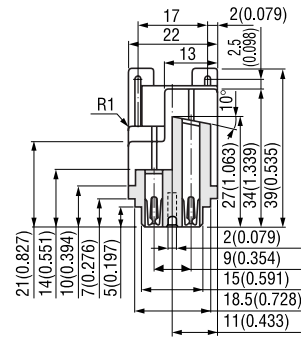


● 7010-□□□-160-F

X-X' Cross Section

■ Dimensions

| No. of contacts | Part No. | A | B | C | D | E |
|-----------------|----------------|----------------|---------------|----------------|--------------|----------------|
| 12 | 7010-012-160-F | 81.08 (3.192) | 72.39 (2.85) | 63.43 (2.497) | 50.80 (2) | 48.80 (1.921) |
| 20 | 7010-020-160-F | 121.72 (4.792) | 113.03 (4.45) | 104.07 (4.097) | 91.44 (3.6) | 89.44 (3.521) |
| 36 | 7010-036-160-F | 203.00 (7.992) | 194.31 (7.65) | 185.35 (7.297) | 172.72 (6.8) | 170.72 (6.721) |

● 7030-□□□-160-F

Unit:mm(inch)


X-X' Cross Section

■ Dimensions

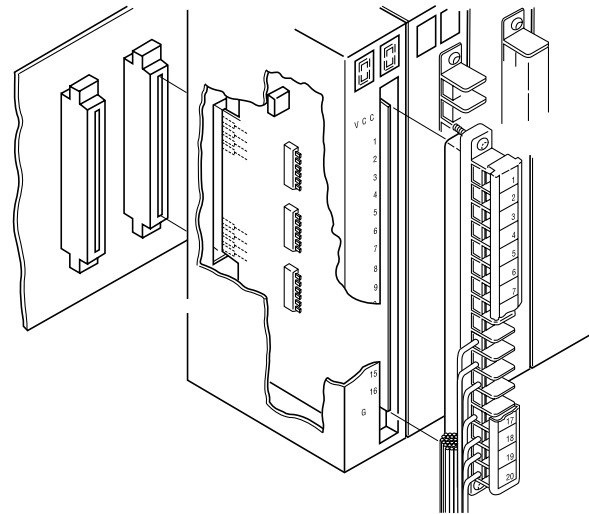
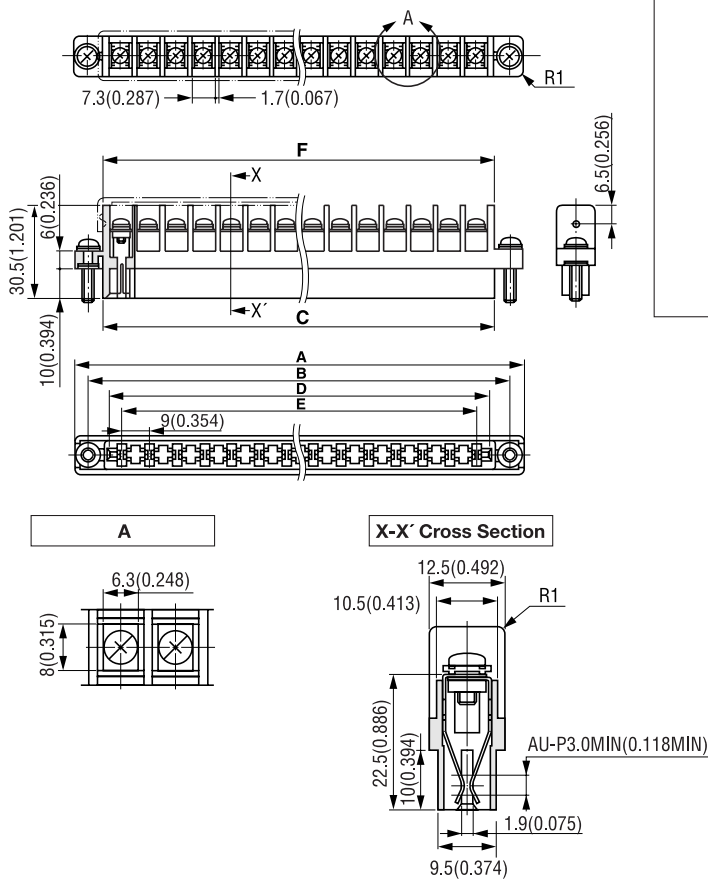
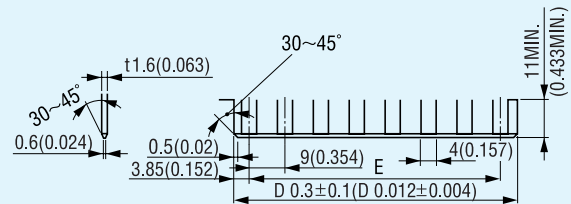
| No. of contacts | Part No. | A | B | C | D | E | F |
|-----------------|----------------|----------------|---------------|----------------|----------------|----------------|----------------|
| 12 | 7030-012-160-F | 81.08 (3.192) | 72.39 (2.85) | 63.43 (2.497) | 50.80 (2.000) | 48.80 (1.921) | 58.30 (2.295) |
| 20 | 7030-020-160-F | 121.72 (4.792) | 113.03 (4.45) | 104.07 (4.097) | 91.44 (3.600) | 89.44 (3.521) | 99.30 (3.909) |
| 36 | 7030-036-160-F | 203.00 (7.992) | 194.31 (7.65) | 185.35 (7.297) | 172.72 (6.800) | 170.72 (6.721) | 180.40 (7.102) |


ORDER CODE
7040-020-165-F

- **F** : RoHS Compliance
- Terminal style
- Number of contacts
020 : 20pin
- Series name

7040-020-165-F

Unit:mm(inch)


Printed Circuit Board Layout

Dimensions

| | A | B | C | D | E | F |
|----|------------------|------------------|------------------|------------------|------------------|------------------|
| 20 | 202.0 (7.953) | 193.0 (7.598) | 183.0 (7.205) | 179.0 (7.047) | 171.0 (6.732) | 182.0 (7.165) |

FEATURES

- Heavy duty card edge terminal connector
- Best I/O connector for programmable/sequence controller
- Indication label identifies terminal location
- RoHS compliance

SPECIFICATIONS

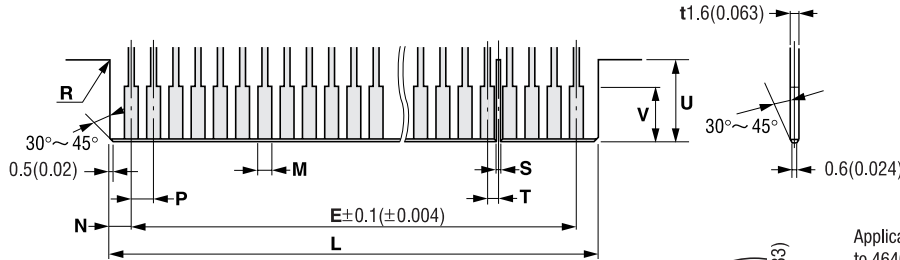
- Current Rating : 10A per contact
- Contact Resistance : 16mΩ max.
- Dielectric Withstanding Voltage : 2000V AC for 1minute
- Insulation Resistance : 5,000MΩ min. at 500V DC
- Insertion Force (all contacts) : 8.2kg max.
- Mithdravral force(all contacts) : 1.3kg min.

MATERIAL

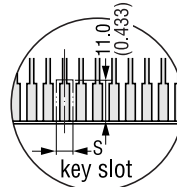
- Insulator : Glass-Filled P.B.T. (UL94V-0), Black
- Contact : Copper alloy
- Plating : Gold over Nickel

CARD EDGE CONNECTORS

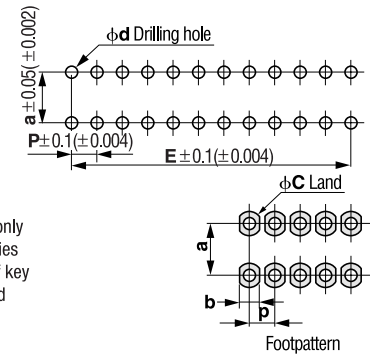
● Contact Finger



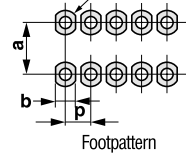
- Note:
1. Dimension S and T are applicable only when key slot is installed
 2. As for dimension D and E, refer to those of the connector which is used



● Mother Board



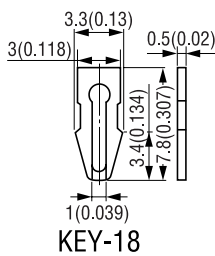
Applicable only to 4640 series connector if key slot installed



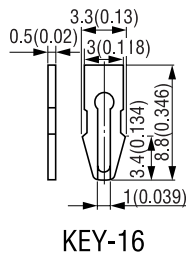
| | L | M | N | P | R | S | T | U | Applicable Polarizing key | V |
|------|-----------------------------------|-------------------------------|----------------------------------|---------------------------------|------------------------|-------------------------------|------------------|-----------------------|---------------------------|-----------------------|
| 1168 | 0-0.5 ± 0.2 (0-0.020 ± 0.008) | 2.25 ± 0.2 (0.089 ± 0.008) | 3.735 ± 0.1 (0.147 ± 0.004) | 3.97 ± 0.1 (0.156 ± 0.004) | R1.0MAX (R0.039MAX) | 1.0 ± 0.1 (0.039 ± 0.004) | 1.985 (0.078) | 10.0MIN (0.394MIN) | KEY-18 | 10.0MIN (0.394MIN) |
| 1285 | | | 3.84 ± 0.1 (0.151 ± 0.004) | 3.96 ± 0.1 (0.156 ± 0.004) | | 1.0 ± 0.1 (0.039 ± 0.004) | 1.985 (0.078) | | KEY-16 | |
| 4640 | 0-0.4 ± 0.15 (0-0.016 ± 0.006) | 1.6 ± 0.05 (0.063 ± 0.002) | 2.34 ± 0.1 (0.092 ± 0.004) | 2.54 ± 0.05 (0.100 ± 0.002) | | 2.53 ± 0.1 (0.100 ± 0.004) | | 11.0MIN (0.433MIN) | KEY-21 | 11.0MIN (0.433MIN) |
| 4820 | 0-0.4 ± 0.1 (0-0.016 ± 0.004) | 1.8 ± 0.05 (0.071 ± 0.002) | 2.978 ± 0.053 (0.117 ± 0.002) | 3.175 ± 0.05 (0.125 ± 0.002) | | 1.0 ± 0.1 (0.039 ± 0.004) | 1.588 (0.063) | 11.0MIN (0.433MIN) | KEY-20A | 11.0MIN (0.433MIN) |

| | d | a | b | p | c |
|------|-----------------|-----------------|----------------|------------------|----------------|
| 1168 | 1.2 (0.047) | 3.9 (0.154) | 2.4 (0.094) | 3.97 (0.156) | 2.6 (0.102) |
| 1285 | 1.25 (0.049) | 5.08 (0.200) | 2.4 (0.094) | 3.96 (0.156) | 2.6 (0.102) |
| 4640 | 0.8 (0.032) | 5.08 (0.200) | — | 2.54 (0.100) | 2.0 (0.079) |
| 4820 | 0.8 (0.032) | 6.35 (0.250) | 1.8 (0.071) | 3.175 (0.125) | 2.3 (0.091) |

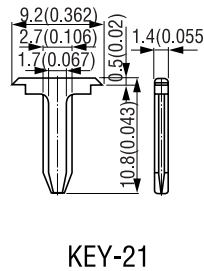
POLARIZING KEY



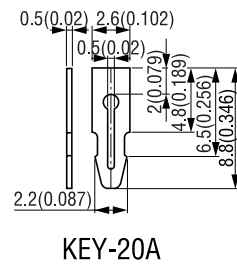
KEY-18



KEY-16



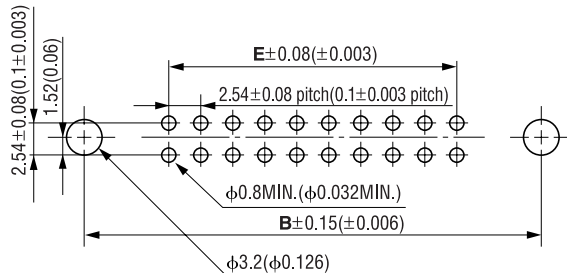
KEY-21



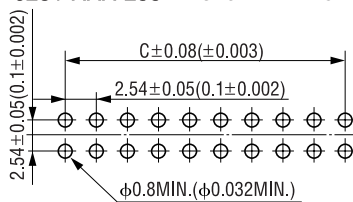
KEY-20A

DC CONNECTORS

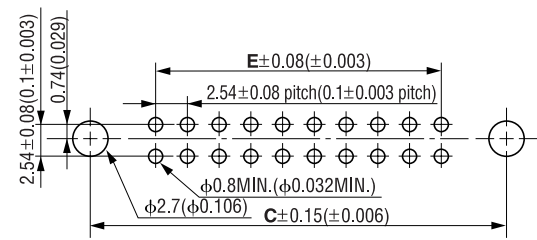
● 6201-XXX-256-F ● 6201S-XXX-256-F



● 6231-XXX-255 ● 6231-XXX-257-F



● 6201-XXX-258-F ● 6201S-XXX-258-F



■ Dimensions

| | B | C | E |
|----|--------------|--------------|--------------|
| 10 | 27.94(1.100) | 21.84(0.860) | 10.16(0.400) |
| 14 | 33.02(1.300) | 26.92(1.060) | 15.24(0.600) |
| 16 | 35.56(1.400) | 29.46(1.160) | 17.78(0.700) |
| 20 | 40.64(1.600) | 34.54(1.360) | 22.86(0.900) |
| 26 | 48.26(1.900) | 42.16(1.660) | 30.48(1.200) |
| 30 | 53.34(2.100) | 47.24(1.860) | 35.56(1.400) |
| 34 | 58.42(2.300) | 52.32(2.060) | 40.64(1.600) |
| 40 | 66.04(2.600) | 59.94(2.360) | 48.26(1.900) |
| 50 | 78.74(3.100) | 72.64(2.860) | 60.96(2.400) |
| 60 | 91.44(3.600) | 85.34(3.360) | 73.66(2.900) |

Specifications and dimensions are subject to change without notice.

