



FEATURES

- 0.6mm contact pitch in a high density miniature connector
- 5 row lead arrangement saves board space
- Alignment plate slides for easy placement (see below)
- Solid diecast shell
- Large guides allow smooth mating and accomodates mating misalignment of up to $\pm 2.5\text{mm}$
- Low profile with 8mm height
- PPS insulator resists SMT soldering temperatures
- Metal shell and Diecast shell control EMI
- RoHS compliance

SPECIFICATIONS

- Connector
 - Insulator : Glass-filled LCP (UL 94V-0), White
 - Contact material : Phosphor Bronze
 - Contact plating :
 - Contact area : $0.25\mu\text{m}$ min. Gold over Nickel
 - Terminal area : $0.03\mu\text{m}$ min. Gold over Nickel
 - Diecast shell material : Zinc alloy
 - Diecast shell plating : Nickel over Copper
 - Metal shell material : Steel
 - Metal shell plating : Nickel over Copper
 - SMT Retention clip material : Phosphor Bronze
 - SMT Retention clip plating : Tin copper alloy Nickel
 - Current rating : 0.5A per contact
 - Contact resistance : $50\text{m}\Omega$ max.
 - Dielectric withstanding voltage : 315V AC for 1 minute
 - Insulation resistance : $1,000\text{M}\Omega$ min. at 500V DC
 - Operating temperature : -55°C to $+85^\circ\text{C}$
 - Insertion force : 10kg max. / 240 pin
 - Withdrawal force : 1.6kg min. / 240 pin
- Guide pin/Guide bushing
 - Material : Steel
 - Plating : Nickel over Copper

ORDER CODE

■ Connector
DS01-240R-F

- Series name
- Plug / Receptacle
P : Plug
R : Receptacle
- Number of contacts
240 : 240 pin
- Contact tail style
R : Right angle
- F : RoHS Compliance

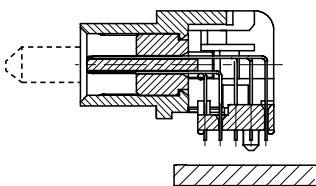
■ Guide pin / Guide bushing
DS01-01

- Series name
DS01P : For plug
DS01R : For receptacle
- Guide
GP : Guide pin for Plug
SR : Guide bushing for Receptacle

admatec
Schareggstrasse 3, CH-5506 Mägenwil
Tel. +41 62 896 00 48, Fax. +41 62 896 25 80
info@admatec.ch, www.admatec.ch

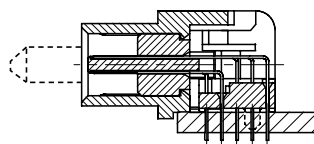
ALIGNMENT PLATE SLIDE MECHANISM

Before connector is placed on the board



- Connector is placed on the board with alignment plate low to align contact tails.

After connector is placed on the board



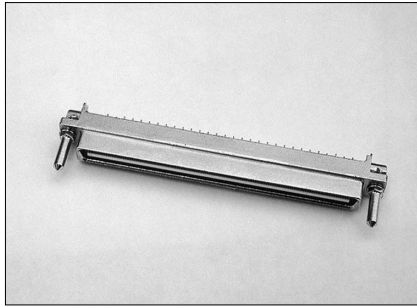
- Alignment plate slides up.

- Positioning bosses for placement are located on the alignment plate.
- Bosses go in the board and alignment plate slides up on contact tails to assure proper alignment.

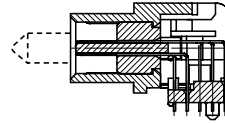
* Delivered with alignment plate down.

DS01P-240P-F (Plug)

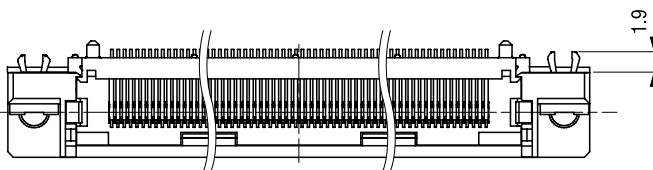
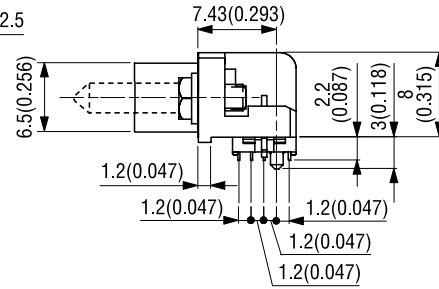
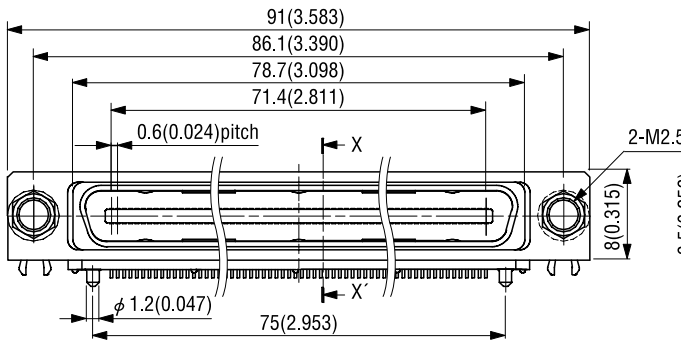
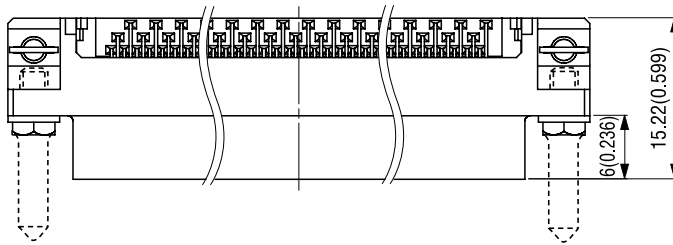
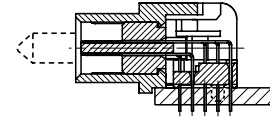
Unit : mm(inch)



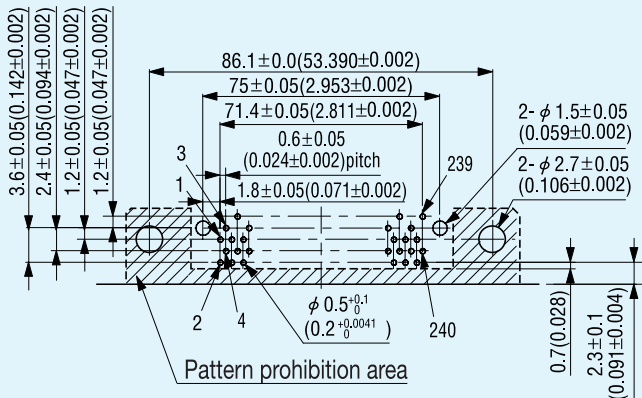
X-X' Cross Section



After placement

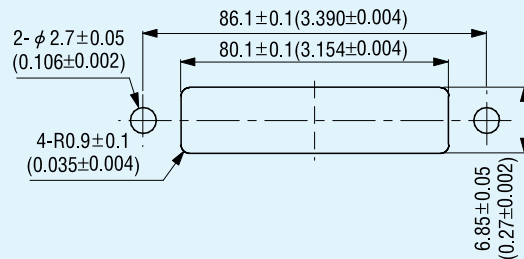


Printed Circuit Board Layout (Component Side View)



■ Panel cut out

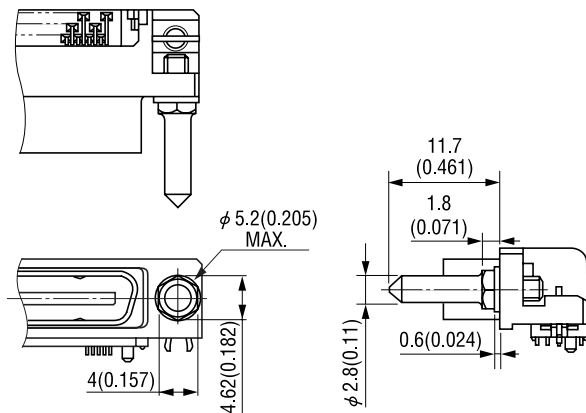
Recommended panel thickness
1(0.039) or less



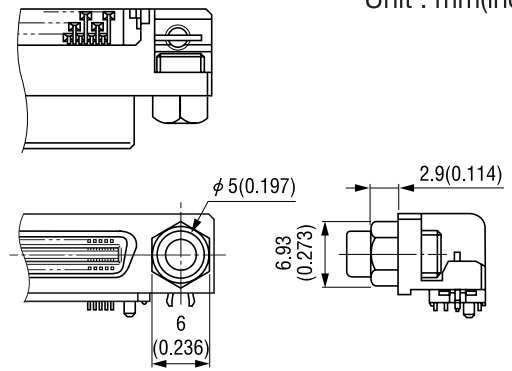
Recommended board thickness t = 0.8~1.6 ± 0.19 (0.031~0.063 ± 0.007)

Guide Pin & Guide Bush

■DS01P-GR-01



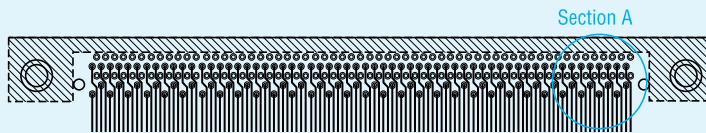
■DS01R-SR-01



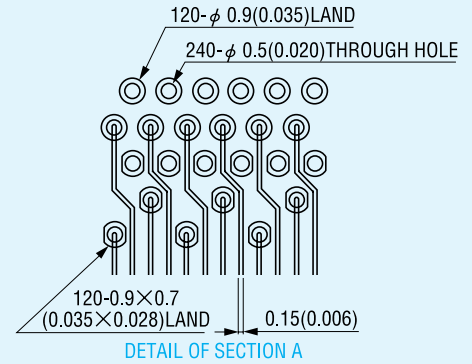
Unit : mm(inch)

Printed Circuit Board Layout (pattern Diagram)

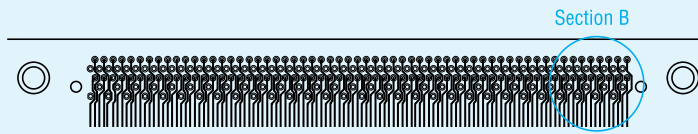
■DS01P/R-240R-F



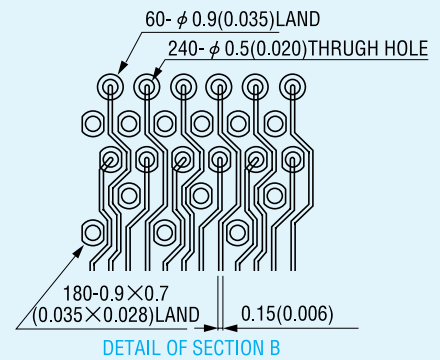
Component side



DETAIL OF SECTION A

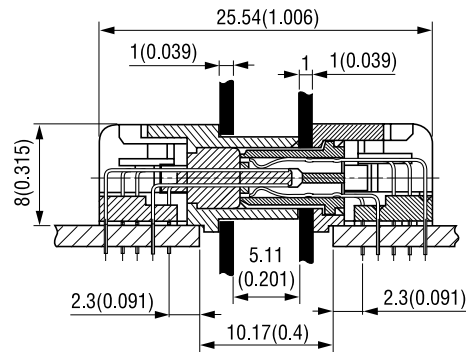


Soldering side (Viewed from component side)



DETAIL OF SECTION B

Mating Application (Horizontal Mating)



Unit : mm(inch)

Schareggstrasse 3, CH-5506 Mägenwil
Tel. +41 62 896 00 48, Fax. +41 62 896 25 80
info@admaterc.ch, www.admaterc.ch