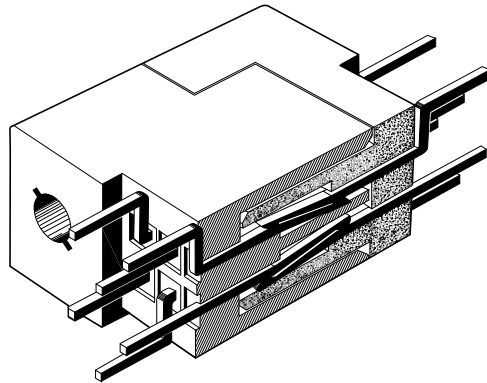


Contact Concept

[Vertical 2-point Straight Beam]
(PATENTED)



[Sectional view of contact area]

<Outline>

KEL has developed a unique straight beam contact with two independent mating points for male and female half pitch connectors which offers low insertion and withdrawal forces with high reliability. In response to the rapidly changing requirements for connectors, from cardedge to standard pitch two piece to half pitch two piece, KEL offers these connectors for today's requirement for high density and reliability.

Key Features

- 1) Balanced design insures stable contact pressure to improve reliability.
- 2) Contact surface is smooth and tapered to reduce insertion and withdrawal forces and increase connector life.
- 3) Lower cost because same contact is used for both male and female connectors.
- 4) Mating process of contacts is self-cleaning with a long wiping area.
- 5) Insulator aligns the mating connectors, prevents mis-insertion and protects the contacts from bending and breakage.

Outline & Application	Features
<p><Outline> The 8840/8850/8855 Series are 1.27mm pitch EMI shielded interface connectors. Their design is the optimum for reducing the size, increasing the mounting density, and multiplying the function of electronic devices. In addition, numerous variations are available including receptacles with lateral and longitudinal cable exits.</p> <p><Application Areas> These connectors are ideal for small office automation equipment, communication, control, and medical instruments.</p>	<ul style="list-style-type: none"> ● One-touch latch (20-80pin) for ease of use. ● Maintains high contact pressure with low insertion and withdrawal forces. ● Diecast cover controls EMI. ● D-shape housing prevents mis-insertion. ● Optional G connectors combines ground wires within 8840 Series-100 position cover ● Insulator prevents deformation of contact. ● Flat cable version of 8850 Series is available. ● RoHS compliance

Products	Type		Termination	Number of pins	Series	page
	Receptacle	Straight Cable exit	I.D.C.	20, 28, 34, 50 60, 68, 80, 100	8840	D-4
		Cable plug			8855	D-9
	Plug	Straight out	DIP Solder		8850	D-5~8
		Right Angle				
8840 Series(Receptacle) harness wiring diagram						D-10
8855 Series(Cable plug) harness wiring diagram						D-11~12
8840/8855 Series Termination tooling						D-15

Specifications

■ Connector

- Insulator : Glass-filled 66 Nylon(UL94V-0)
- Contact : Copper alloy
- Finish : Mating area ; Gold over Nickel
Terminal area ; Tin copper over Nickel
- 8840 Series D-Shaped shell :
Material ; Steel
Plating ; Nickel over Copper
- Current rating : 0.5A per contact
- Contact resistance : 30mΩ max.
- Dielectric resistance : 650V AC for 1 minute
- Insulation resistance : 1,000MΩ min. at 500V DC
- Operating temperature : -55~+85:
- Recommended Cable : #28 AWG(7/0.127)
Outer diameter of insulation : 0.58mm

■ Cover and accessories (Materials and plating)

- Diecast cover :
Zinc alloy(20-80 pins),
Aluminum(100 pin),
Finish : Nickel Plating over Copper.
- Spring lock :
Stainless steel
- Lock screw :
Steel with Nickel over Copper plating
- Cable clamp :
Straight out : Stainless steel
Horizontal out : Steel with Nickel over Copper plating
- Lock nut :
Steel with Nickel over Copper plating

Order Code

■ Connector

8840-XXX-174 X X-F

- Series : Receptacle
- No. of Contacts.
20,28,34,50,60,68,80,100
- Contact style : 174
- Recommended Cable
* See recommended
Cable mentioned under.
- Selective plating
D : 0.25μm min.
H : 0.76μm min.

● F : RoHS Compliance

■ Board Mounted Plug

8850-XXX-170 X X-F

- Series : plug
- No. of contacts
20,28,34,50,60,68,80
and ☆100.
- Terminal Style
L : Right angle
S : Straight
- Selective Plating
D : 0.25 μm min
H : 0.76 μm min

● F : RoHS Compliance

■ Lock Nut(100pin connector only)

8850-SR-XX

- Panel thickness
01 : No panel
02 : 0.8~1.0mm
03 : 1.6mm
05 : 0.8mm
(Lock nut are sold in pairs)

- * Recommended cable
A : #28 AWG (7/0.127) Discrete wires
B : #28 AWG (7/0.127) Laminated wires
F : #28 AWG (7/0.127) Flat cable (8855 only)

☆100 pin of 8855 and 8850 : Please specify lock nut when you ordering

■ Cover for Straight Cable Exit 8840S-XXX-CVR

- No. of contacts
20,28,34,50,60,68,80

* Cover for Straight Cable Exit(100pin)

8840S-100-X-CVR

- Mounted panel thickness
1 : No panel
2 : 0.8~1.0mm
3 : 1.6mm

■ Cable Plug 8855-XXX-174X X-F

● F : RoHS Compliance

- Selective plating
D : 0.25 μm min.
H : 0.76 μm min.

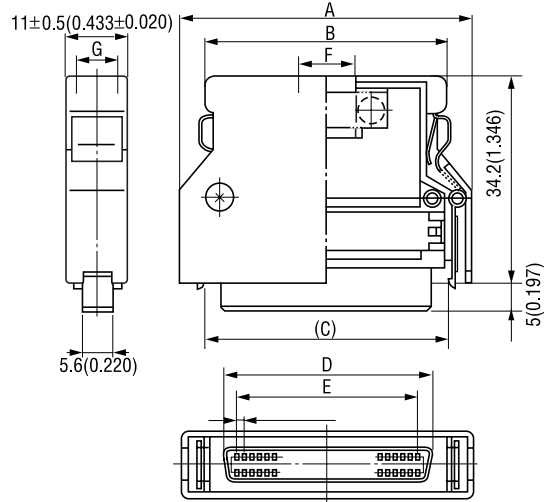
● Recommended Cable
* See recommended Cable
mentioned under.

- No. of contacts
20,28,34,50,60,68,80
and ☆100.

8840 Series (20, 28, 34, 50, 60, 68, 80 pins) Straight Cable Exit

Unit:mm(inch)

■ Receptacle

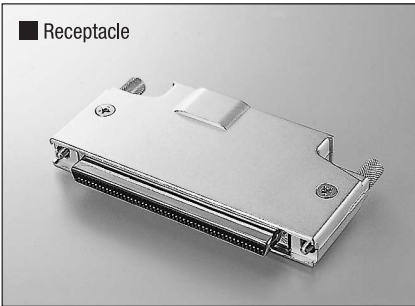

Product Table / Dimensions

No. of contacts	Part Number	A	B	C	D	E	F	G
20	8840S-020-CVR	30.00 (1.181)	22.30 (0.878)	21.30 (0.839)	16.48 (0.649)	11.43 (0.450)	6.70 (0.264)	6.70 (0.264)
28	8840S-028-CVR	35.08 (1.381)	27.38 (1.078)	26.40 (1.039)	21.56 (0.849)	16.51 (0.650)	7.50 (0.295)	7.50 (0.295)
34	8840S-034-CVR	38.89 (1.531)	31.19 (1.228)	30.20 (1.189)	25.37 (0.999)	20.32 (0.800)	8.70 (0.343)	8.70 (0.343)
50	8840S-050-CVR	49.05 (1.931)	41.35 (1.628)	40.40 (1.591)	35.53 (1.399)	30.48 (1.200)	10.00 (0.394)	8.50 (0.335)
60	8840S-060-CVR	55.40 (2.181)	47.70 (1.878)	46.70 (1.839)	41.88 (1.649)	36.83 (1.450)	11.00 (0.433)	8.50 (0.335)
68	8840S-068-CVR	60.48 (2.381)	52.78 (2.078)	51.80 (2.039)	46.96 (1.849)	41.91 (1.650)	12.00 (0.472)	8.50 (0.335)
80	8840S-080-CVR	68.10 (2.681)	60.40 (2.378)	59.40 (2.339)	54.58 (2.149)	49.53 (1.950)	13.00 (0.512)	8.50 (0.335)

8840 Series (100 pin) Straight Cable Exit

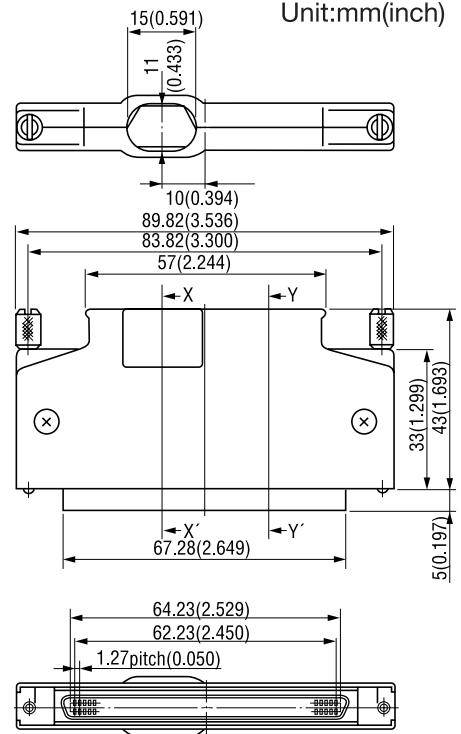
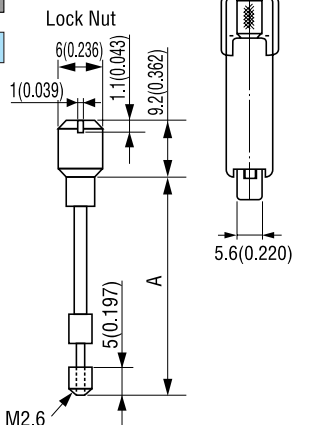
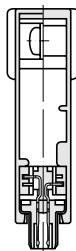
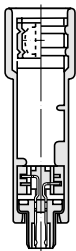
Unit:mm(inch)

■ Receptacle



X-X' Cross Section

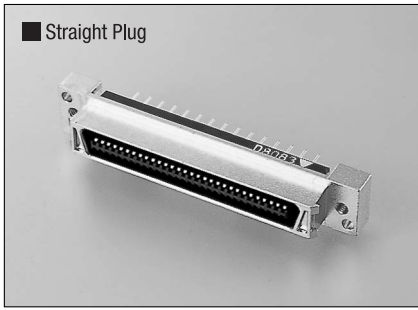
Y-Y' Cross Section


Product Table / Dimensions

Part Number	Mounted Panel Thickness	A
8840S-100-1-CVR	No Panel	33.8 (1.331)
8840S-100-2-CVR	0.8~1.0mm	33.3 (1.311)
8840S-100-3-CVR	1.6mm	32.8 (1.291)

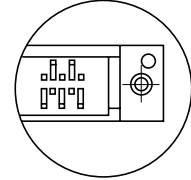
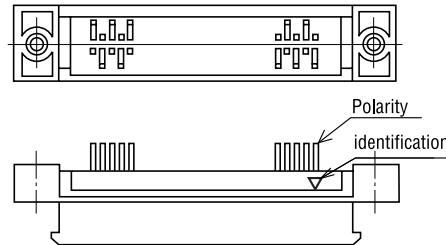
8850 Series (20,28,34,50,60,68,80pins) Straight Plug

Unit:mm(inch)

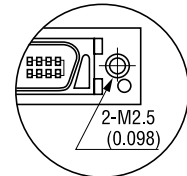
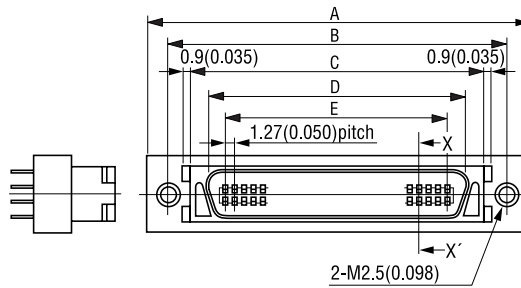
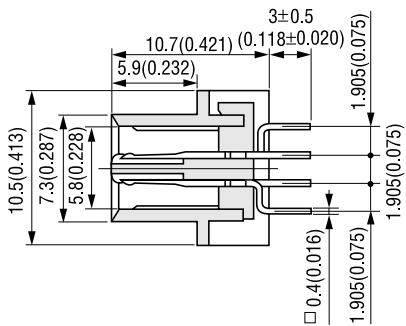


20,50 pins

28,34,60,68,80 pins



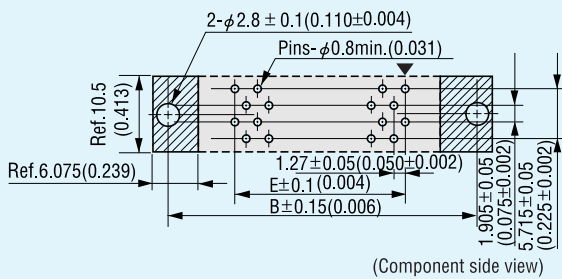
X-X' Cross Section



Printed Circuit Board Layout

■ Straight Plug

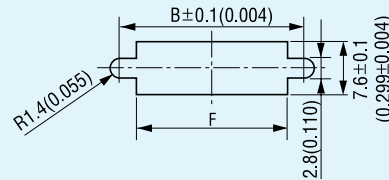
34,50 pins Recommended P.C.B. thickness : 1.6±0.19(0.063±0.007)



(Component side view)

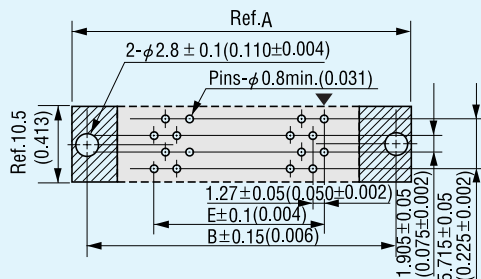
■ Panel Cutout

20,28,34,50,60,68,80 pins Recommended panel thickness : 2(0.079)max.



20,28,60,68,80 pins

Recommended P.C.B. thickness : 1.6±0.19(.063±.007)



(Component side view)

■ Dimensions

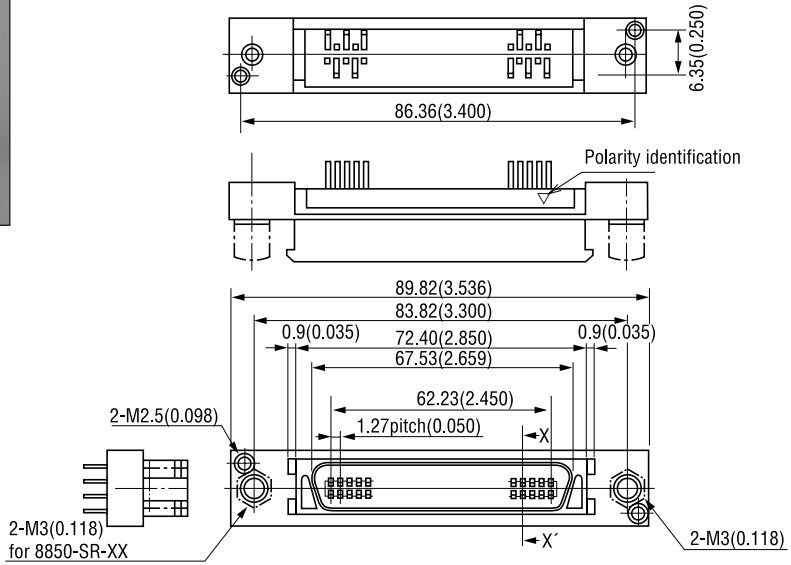
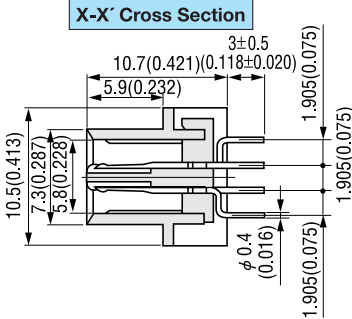
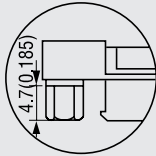
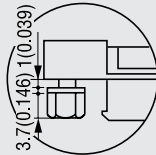
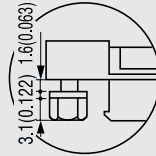
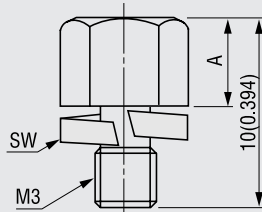
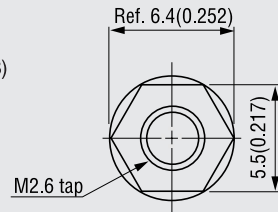
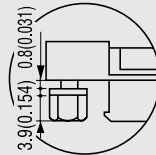
No.of contacts	A	B	C	D	E	F
20	33.40 (1.315)	27.40 (1.079)	21.60 (0.850)	16.73 (0.659)	11.43 (0.450)	24.40 (0.961)
28	38.48 (1.515)	32.48 (1.279)	26.68 (1.050)	21.81 (0.859)	16.51 (0.650)	29.48 (1.161)
34	42.29 (1.665)	36.29 (1.429)	30.49 (1.200)	25.62 (1.009)	20.32 (0.800)	33.29 (1.311)
50	52.45 (2.065)	46.45 (1.829)	40.65 (1.600)	35.78 (1.409)	30.48 (1.200)	43.45 (1.711)
60	58.80 (2.315)	52.80 (2.079)	47.00 (1.850)	42.13 (1.659)	36.83 (1.450)	49.80 (1.961)
68	63.88 (2.515)	57.88 (2.279)	52.08 (2.050)	47.21 (1.859)	41.91 (1.650)	54.88 (2.161)
80	71.50 (2.815)	65.50 (2.579)	59.70 (2.350)	54.83 (2.159)	49.53 (1.950)	62.50 (2.461)

8850 Series (100 pin) Straight Plug

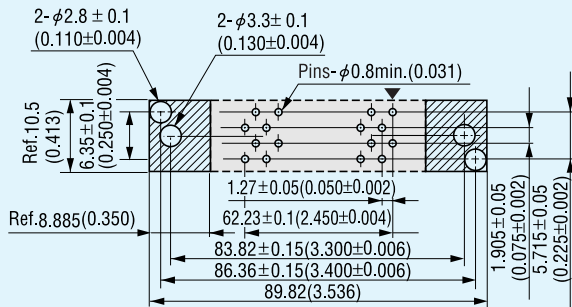
Unit:mm(inch)



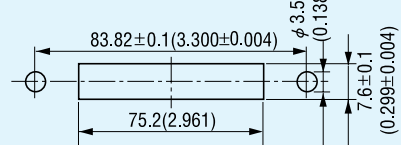
■ Straight Plug


Nut For Lock Screw
8850-SR-01
(Without mounting panel)

8850-SR-02
Mounting Panel : 1.0mm(0.039)

8850-SR-03
Mounting panel : 1.6mm(0.063)

8850-SR-05
Mounting panel : 0.8mm(0.031)


A	Part Number
4.7(0.185)	01(t0)
3.7(0.146)	02(t1.0)
3.1(0.122)	03(t1.6)
3.9(0.154)	05(t0.8)

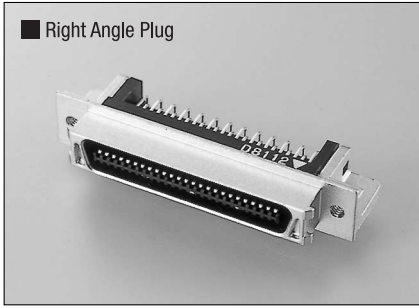
Printed Circuit Board Layout
100 pin Recommended P.C.B thickness : 1.6±0.19(0.063±0.007)


(Component side view)

Panel cutout
100 pin Recommended panel thickness:1.6(0.063) max.


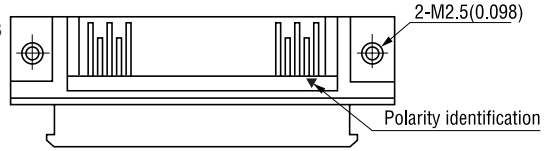
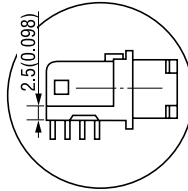
8850 Series (20,28,34,50,60,68,80 pins) Right Angle Plug

Unit:mm(inch)

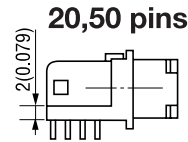
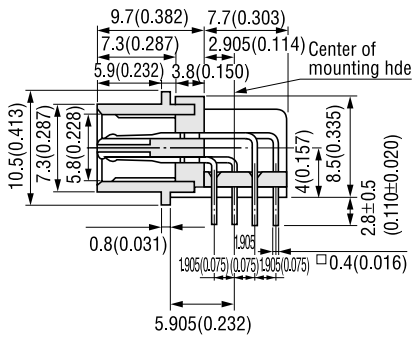


Right Angle Plug

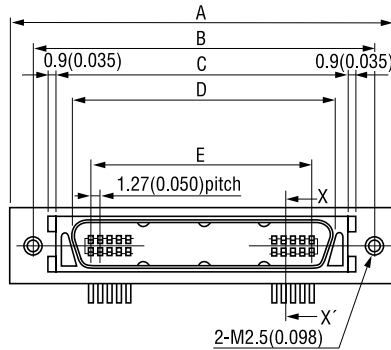
28,34,60,68,80 pins



X-X' Cross Section



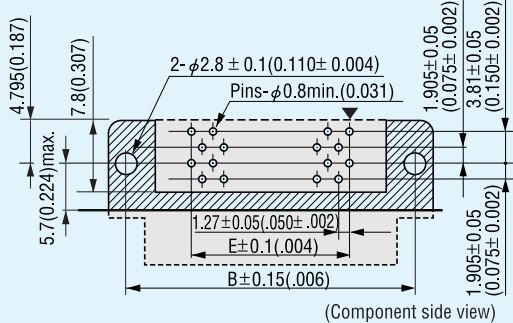
20,50 pins



Printed Circuit Board Layout

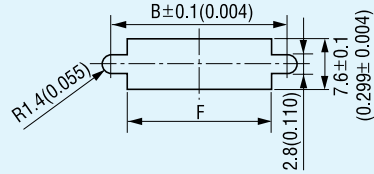
Right Angle Type

34,50 pins Recommended P.C.B. thickness : 1.6±0.19(0.063±0.007)



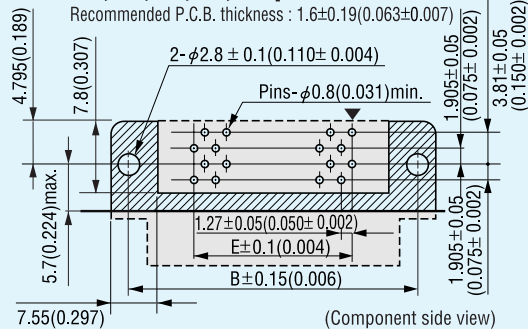
Panel Cutout

20,28,34,50,60,68,80 pins Recommended panel thickness : 2(0.079)max.



20,28,60,68,80 pins

Recommended P.C.B. thickness : 1.6±0.19(0.063±0.007)

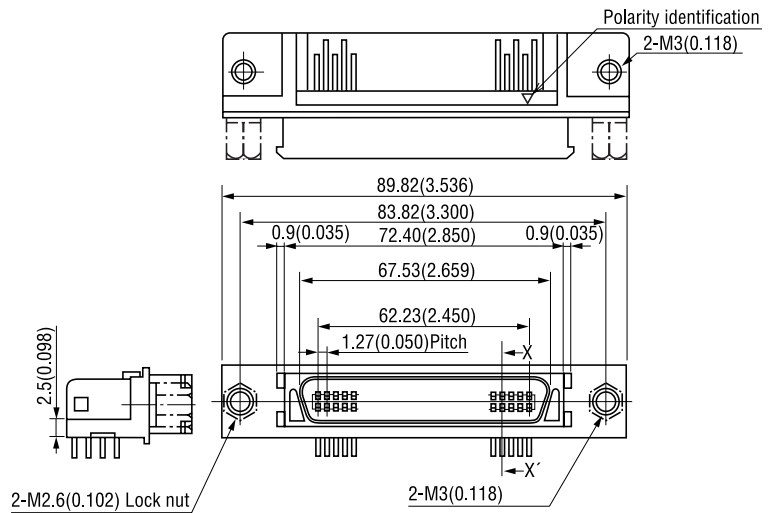
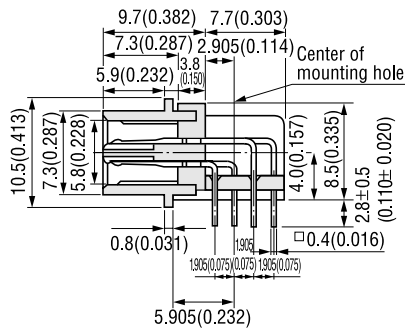


Dimensions

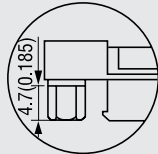
No. of contacts	A	B	C	D	E	F
20	33.48 (1.315)	27.40 (1.079)	21.60 (0.850)	16.73 (0.659)	11.43 (0.450)	24.40 (0.961)
28	38.48 (1.515)	32.48 (1.279)	26.68 (1.050)	21.81 (0.859)	16.51 (0.650)	29.48 (1.161)
34	42.29 (1.665)	36.29 (1.429)	30.49 (1.200)	25.62 (1.009)	20.32 (0.800)	33.29 (1.311)
50	52.45 (2.065)	46.45 (1.829)	40.65 (1.600)	35.78 (1.409)	30.48 (1.200)	43.45 (1.711)
60	58.80 (2.315)	52.80 (2.079)	47.00 (1.850)	42.13 (1.659)	36.83 (1.450)	49.80 (1.961)
68	63.88 (2.515)	57.88 (2.279)	52.08 (2.050)	47.21 (1.859)	41.91 (1.650)	54.88 (2.161)
80	71.50 (2.815)	65.50 (2.579)	59.70 (2.350)	54.83 (2.159)	49.53 (1.950)	62.50 (2.461)

8850 Series (100 pin) Right Angle Plug

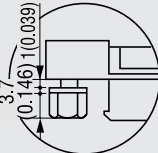
Unit:mm(inch)


X-X' Cross Section

Nut For Lock Screw
8850-SR-01

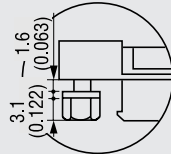
(Without mounting panel)


8850-SR-02

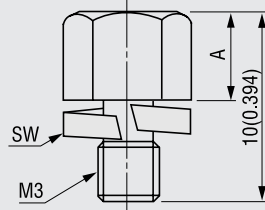
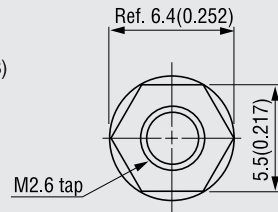
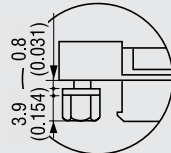
Mounting Panel : 1mm(0.039)


8850-SR-03

Mounting panel : 1.6mm(0.063)


8850-SR-05

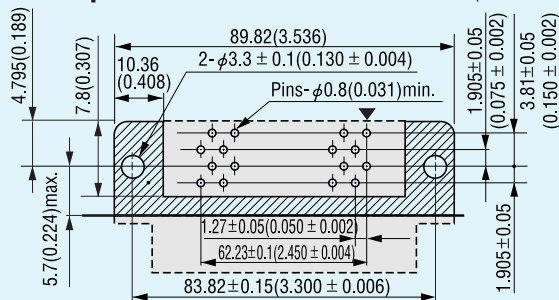
Mounting panel : 0.8mm(0.031)



A	Part Number
4.7(0.185)	01(t0)
3.7(0.146)	02(t1.0)
3.1(0.122)	03(t1.6)
3.9(0.154)	05(t0.8)

Printed Circuit Board Layout
Right Angle plug
100 pin

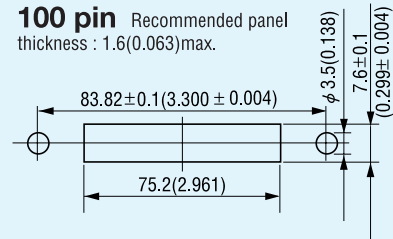
Recommended P.C.B. thickness : 1.6±0.19(0.063±0.007)



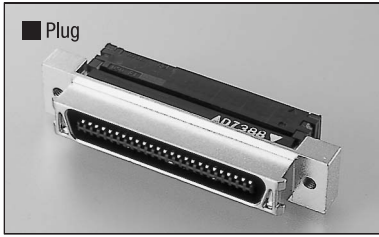
(Component side view)

Panel Cutout
100 pin

Recommended panel thickness : 1.6(0.063)max.

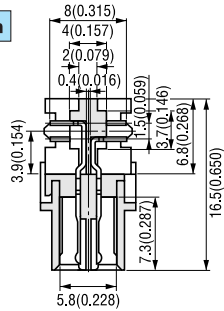


8855 Series (20,28,34,50,60,68,80 pins) Cable Plug



■ Plug

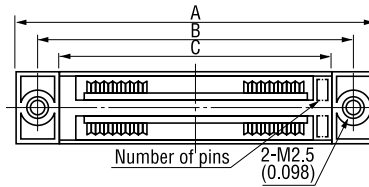
X-X' Cross Section



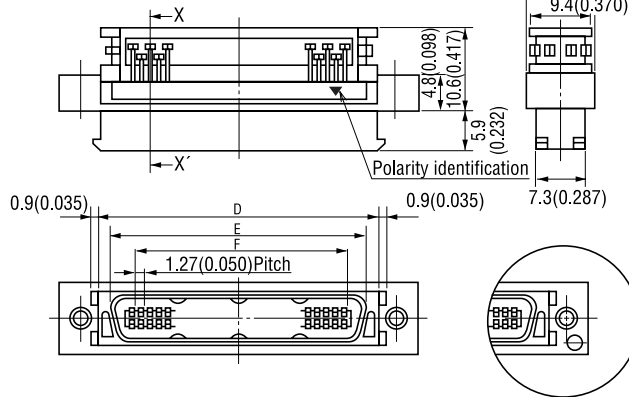
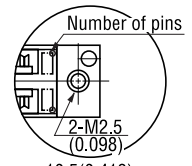
■ Dimensions

pin	A	B	C	D	E	F
20	33.40 (1.315)	27.40 (1.079)	20.75 (0.817)	21.60 (0.850)	16.73 (0.659)	13.13 (0.517)
28	38.48 (1.515)	32.48 (1.279)	25.83 (1.017)	26.68 (1.050)	21.81 (0.859)	18.21 (0.717)
34	42.29 (1.665)	36.29 (1.429)	29.64 (1.167)	30.49 (1.200)	25.62 (1.009)	22.02 (0.867)
50	52.45 (2.065)	46.45 (1.829)	39.80 (1.567)	40.65 (1.600)	35.78 (1.409)	32.18 (1.267)
60	58.80 (2.315)	52.80 (2.079)	46.15 (1.817)	47.00 (1.850)	42.13 (1.659)	38.53 (1.517)
68	63.88 (2.515)	57.88 (2.279)	51.23 (2.017)	52.08 (2.050)	47.21 (1.859)	43.61 (1.717)
80	71.50 (2.815)	65.50 (2.579)	58.85 (2.317)	59.70 (2.350)	54.83 (2.159)	51.23 (2.017)

20,50 pins



28,34,60, 68,80 pins

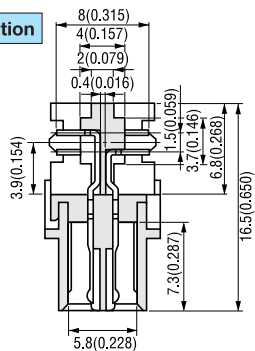


8855 Series (100 pin) Cable Plug

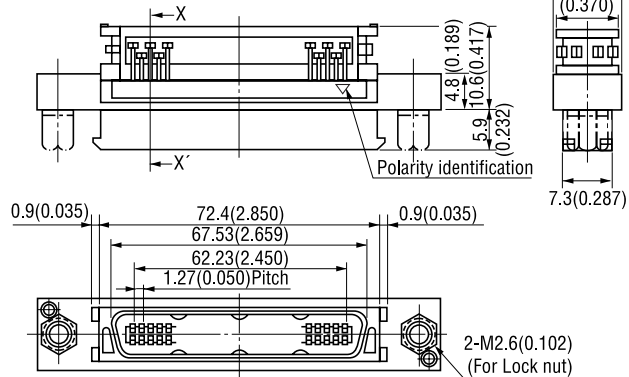
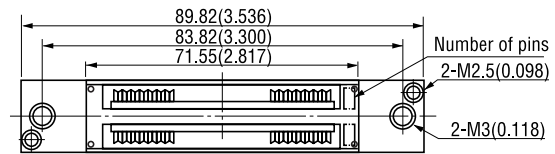


■ Plug

X-X' Cross Section



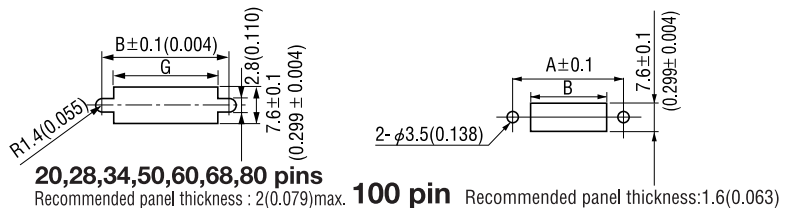
Unit:mm(inch)



Dimension for Panel Cutout

■ Dimensions

No. of contacts	A	B	No. of contacts	A	B
20	27.40 (1.079)	24.40 (0.961)	60	52.80 (2.079)	49.80 (1.961)
28	32.48 (1.279)	29.48 (1.161)	68	57.88 (2.279)	54.88 (2.161)
34	36.29 (1.429)	33.29 (1.311)	80	65.50 (2.579)	62.50 (2.461)
50	46.45 (1.829)	43.45 (1.711)	100	83.82 (3.300)	75.20 (2.961)



Order Code

■ Straight Cable Exit

8840 S-XXX-174 X D F-XXX X X X

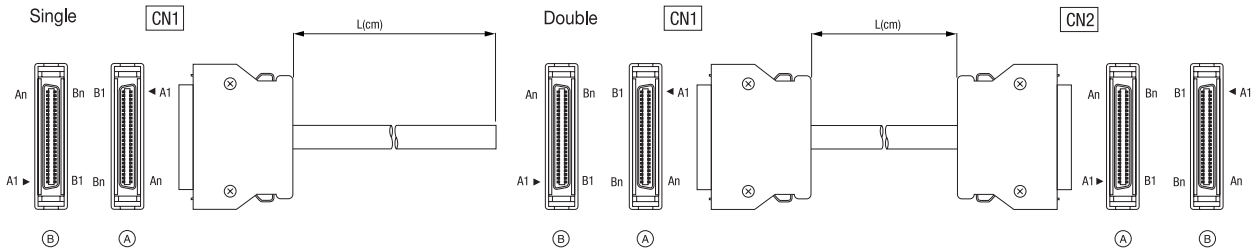
- Series 8840
- Diecast Cover S : Straight cable exit
- Number of Contacts 20,28,34,50,60,68,80 pins
- Contact Type 174
- Recommended Cable
A : AWG28(7/0.127)Discrete wires
B : AWG28(7/0.127)Laminated wires

- Wiring identifier
H : Standard wiring
J : Sub-standard wiring
- Connector direction(Left : CN1, Right : CN2)
1 : AA
2 : AB
3 : BA
4 : BB
5 : A
6 : B

- Wiring Code
S : Single
W : Double

- Cable Length(cm)
- F : RoHS Compliance

- Gold Plating in Mating Area
D : 0.25 μ m or min



Order Code

■ Straight Cable Exit(100pins)

8840 S-100 -174 X D F X-XXX X X X

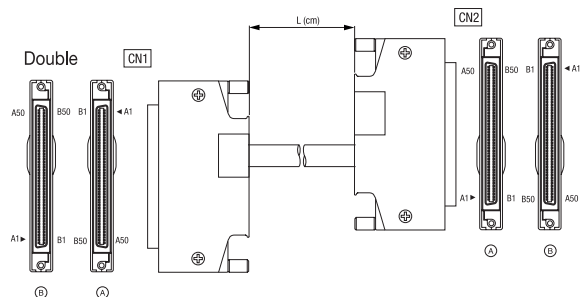
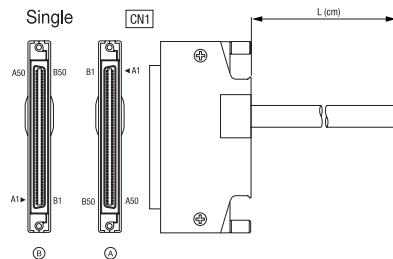
- series 8840
- Diecast Cover S : Straight cable exit
- Number of Contacts 100 pins
- Contact Type 174
- Recommended cable
A : AWG28(7/0.127)Discrete wires
B : AWG28(7/0.127)Laminated wires

- Wiring identifier
H : Standard wiring
J : Sub-standard wiring
- Connector direction(Left : CN1, Right : CN2)
1 : AA
2 : AB
3 : BA
4 : BB
5 : A
6 : B

- Wiring Code
S : Single
W : Double

- Cable Length(cm)
- Mounting Panel Thickness
1 : No panel
2 : Panel thickness from 0.8~1.0mm
3 : Panel thickness of 1.6mm

- F : RoHS Compliance
- Gold Plating
D : 0.25 μ m or more



※Please consult our sales office for more information

★For harness quotations, a salesperson needs to contact you. Please contact your local sales office.
★For S (Wiring Code), orders are accepted in even quantities.

8855-XXX-174XX Cable Plug Order Code

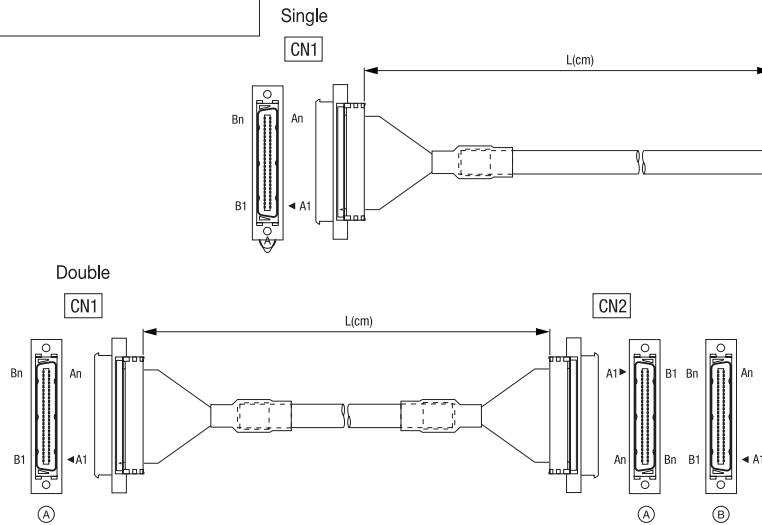
8855-XXX-174 X D F -XXX X X X

- Series
8855
- Number of pins
20,28,34,50,60,68,80,100 pins
- Contact Number
174
- Recommended Cable
A : AWG28(7/0.127)Discrete wires
B : AWG28(7/0.127)Laminated wires
- Gold Plating
D : 0.25 μ m min.(Standard)
- F : RoHS Compliance
- Cable Length(cm)

- Wiring Identifier
H : Standard wiring
J : Sub-standard wiring

- Connector Direction
(Left : CN1, Right : CN2)
- 1 : AA } W : Double
- 2 : AB } S : Single
- 5 : A }

- Wiring Code
S : Single
W : Double



- For harness quotations, a salesperson needs to contact you. Please contact your local sales office.
- For S(Wiring Code), orders are accepted in even quantities.

8855 Series (Flat Ribbon Type) Order Code

■ Straight Cable Exit

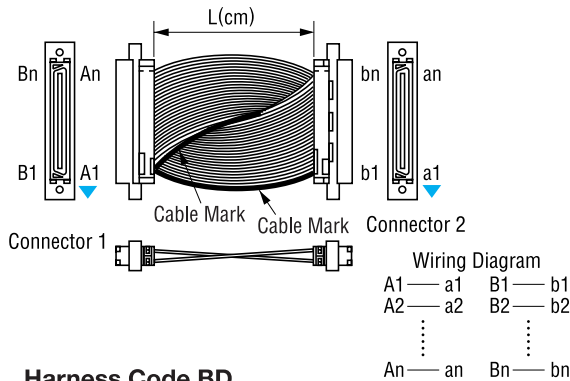
8855-XXX-174 F D F-XXX X-XX (C)

- Series
8855
- Number of pins
20,28,34,50,60,68,80,100 pins
- Contact Number
174
- Flat Cable
F : AWG28(7/0.127)
- Gold Plating
D : 0.25 μm or min.(Standard)
- Cable Length(cm)
● F : RoHS Compliance
- Wiring type
Omit : Twist type
C : Through type(Wiring code : BB)
- Wiring Code
AA,AC,BB,BD,AO,CO
- Cable type
Omit : Flat cable(Standard)
S : Intermittent bonded cable*
T : Twist & Flat cable*

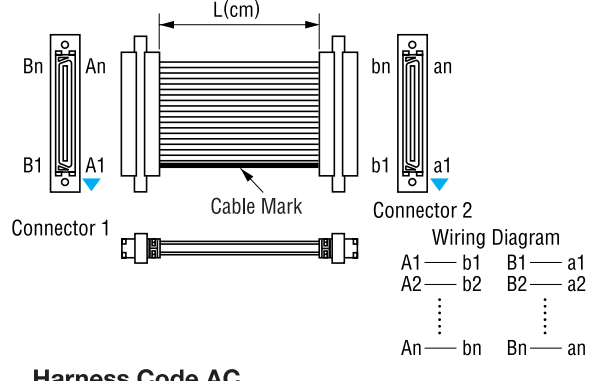
※ Only flat and twisted-flat cables are available for BB and BD-wired products.
● Flat and twisted-flat cables have a limited L dimension as they are pressure-welded at the fused connections.

8855 Series (Flat Ribbon Type) Order Code

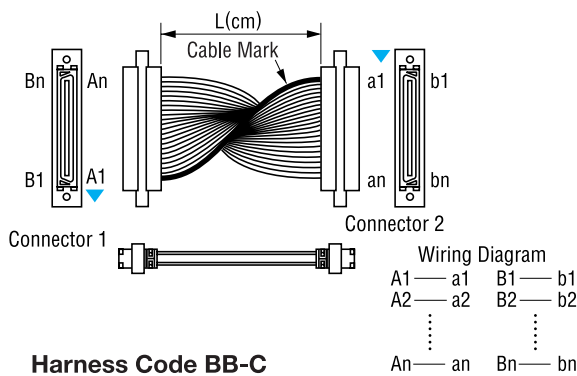
Harness Code BB



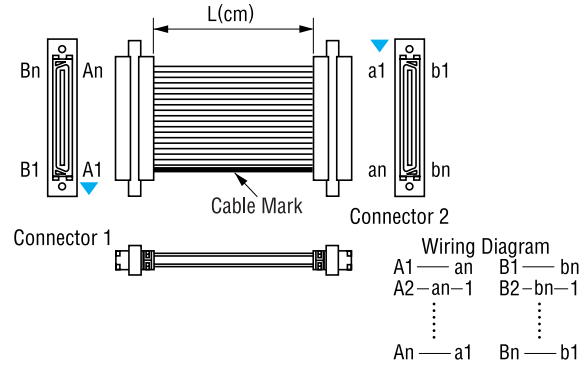
Harness Code AA



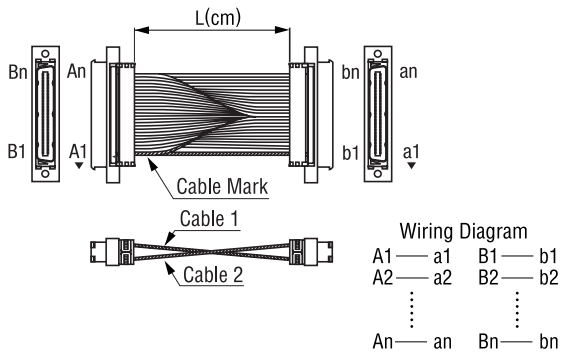
Harness Code BD



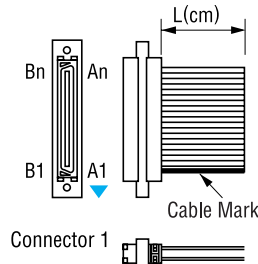
Harness Code AC



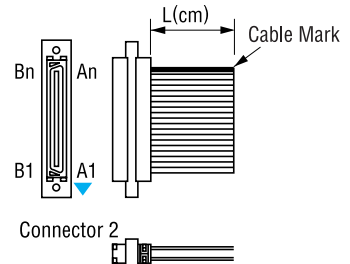
Harness Code BB-C



Harness Code AO



Harness Code CO



▼ = Polarity identification

● For harness quotations, a salesperson needs to contact you. Please contact your local sales office.
● For S, AO and CO (Wiring Codes), orders are accepted in even quantities.



8840/8855 Standard Wiring Table

Standard wiring table(20pin)

Wire No.	Twist No.	Wire Color	Mark Color	Marking	CN1 Pin No.	CN2 Pin No.
1	1	Orange	Red		A1	A1
2		Black	Black		A2	A2
3	2	Gray	Red		A3	A3
4		Black	Black		A4	A4
5	3	White	Red		A5	A5
6		Black	Black		A6	A6
7	4	Yellow	Red		A7	A7
8		Black	Black		A8	A8
9		Black	Black		A9	A9
10	5	Pink	Red		A10	A10
11		Black	Black		B1	B1
12	6	Orange	Red		B2	B2
13		Black	Black		B3	B3
14	7	Gray	Red		B4	B4
15		Black	Black		B5	B5
16	8	White	Red		B6	B6
17		Black	Black		B7	B7
18	9	Yellow	Red		B8	B8
19		Black	Black		B9	B9
20	10	Pink	Red		B10	B10

Standard wiring table(28pin)

Wire No.	Twist No.	Wire Color	Mark Color	Marking	CN1 Pin No.	CN2 Pin No.
1	1	Orange	Red		A1	A1
2		Black	Black		A2	A2
3	2	Gray	Red		A3	A3
4		Black	Black		A4	A4
5	3	White	Red		A5	A5
6		Black	Black		A6	A6
7	4	Yellow	Red		A7	A7
8		Black	Black		A8	A8
9		Black	Black		A9	A9
10	5	Pink	Red		A10	A10
11		Black	Black		A11	A11
12	6	Orange	Red		A12	A12
13		Black	Black		A13	A13
14	7	Gray	Red		A14	A14
15		Black	Black		B1	B1
16	8	White	Red		B2	B2
17		Black	Black		B3	B3
18	9	Yellow	Red		B4	B4
19		Black	Black		B5	B5
20	10	Pink	Red		B6	B6
21		Black	Black		B7	B7
22	11	Orange	Red		B8	B8
23		Black	Black		B9	B9
24	12	Gray	Red		B10	B10
25		Black	Black		B11	B11
26	13	White	Red		B12	B12
27		Black	Black		B13	B13
28	14	Yellow	Red		B14	B14

Standard wiring table(34pin)

Wire No.	Twist No.	Wire Color	Mark Color	Marking	CN1 Pin No.	CN2 Pin No.
1	1	Orange	Red		A1	A1
2		Black	Black		A2	A2
3	2	Gray	Red		A3	A3
4		Black	Black		A4	A4
5	3	White	Red		A5	A5
6		Black	Black		A6	A6
7	4	Yellow	Red		A7	A7
8		Black	Black		A8	A8
9		Black	Black		A9	A9
10	5	Pink	Red		A10	A10
11		Black	Black		A11	A11
12	6	Orange	Red		A12	A12
13		Black	Black		A13	A13
14	7	Gray	Red		A14	A14
15		Black	Black		A15	A15
16	8	White	Red		A16	A16
17		Black	Black		A17	A17
18	9	Yellow	Red		B1	B1
19		Black	Black		B2	B2
20	10	Pink	Red		B3	B3
21		Black	Black		B4	B4
22	11	Orange	Red		B5	B5
23		Black	Black		B6	B6
24	12	Gray	Red		B7	B7
25		Black	Black		B8	B8
26	13	White	Red		B9	B9
27		Black	Black		B10	B10
28	14	Yellow	Red		B11	B11
29		Black	Black		B12	B12
30	15	Pink	Red		B13	B13
31		Black	Black		B14	B14
32	16	Orange	Red		B15	B15
33		Black	Black		B16	B16
34	17	Gray	Red		B17	B17
35		Black	Black			
36	18	White	Red			

Standard wiring table(80pin)

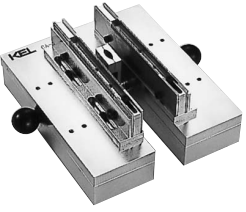


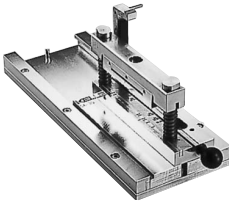
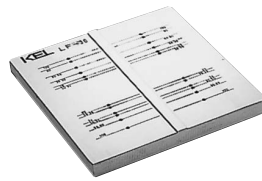

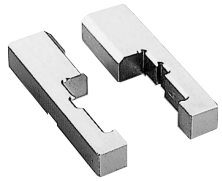

Wire No.	Twist No.	Wire Color	Mark Color	Marking	CN1 Pin No.	CN2 Pin No.	Wire No.	Twist No.	Wire Color	Mark Color	Marking	CN1 Pin No.	CN2 Pin No.
1	1	Orange	Red		A1	A1	41	21	Orange	Red		B1	B1
2		Black	Black		A2	A2	42	22	Black	Black		B2	B2
3	2	Gray	Red		A3	A3	43	22	Gray	Red		B3	B3
4		Black	Black		A4	A4	44	23	Black	Black		B4	B4
5	3	White	Red		A5	A5	45	23	White	Red		B5	B5
6		Black	Black		A6	A6	46	24	Black	Black		B6	B6
7	4	Yellow	Red		A7	A7	47	24	Yellow	Red		B7	B7
8		Black	Black		A8	A8	48	25	Black	Black		B8	B8
9		Black	Black		A9	A9	49	25	Pink	Red		B9	B9
10	5	Pink	Red		A10	A10	50	26	Orange	Red		B10	B10
11		Black	Black		A11	A11	51	27	Gray	Red		B11	B11
12	6	Orange	Red		A12	A12	52	27	Black	Black		B12	B12
13		Black	Black		A13	A13	53	28	White	Red		B13	B13
14	7	Gray	Red		A14	A14	54	28	Black	Black		B14	B14
15		Black	Black		A15	A15	55	29	Yellow	Red		B15	B15
16	8	White	Red		A16	A16	56	30	Pink	Red		B16	B16
17		Black	Black		A17	A17	57	31	Orange	Red		B17	B17
18	9	Yellow	Red		A18	A18	58	32	Gray	Red		B18	B18
19		Black	Black		A19	A19	59	33	White	Red		B19	B19
20	10	Pink	Red		A20	A20	60	34	Yellow	Red		B20	B20
21		Black	Black		A21	A21	61	35	Pink	Red		B21	B21
22	11	Orange	Red		A22	A22	62	36	Orange	Red		B22	B22
23		Black	Black		A23	A23	63	37	Gray	Red		B23	B23
24	12	Gray	Red		A24	A24	64	38	White	Red		B24	B24
25		Black	Black		A25	A25	65	39	Yellow	Red		B25	B25
26	13	White	Red		A26	A26	66	40	Pink	Red		B26	B26
27		Black	Black		A27	A27	67	37	Gray	Red		B27	B27
28	14	Yellow	Red		A28	A28	68	38	White	Red		B28	B28
29		Black	Black		A29	A29	69	39	Yellow	Red		B29	B29
30	15	Pink	Red		A30	A30	70	40	Pink	Red		B30	B30
31		Black	Black		A31	A31	71					B31	B31
32	16	Orange	Red		A32	A32	72					B32	B32
33		Black	Black		A33	A33	73					B33	B33
34	17	Gray	Red		A34	A34	74					B34	B34
35		Black	Black		A35	A35	75					B35	B35
36	18	White	Red		A36	A36	76					B36	B36
37		Black	Black		A37	A37	77					B37	B37
38	19	Yellow	Red		A38	A38	78					B38	B38
39		Black	Black		A39	A39	79					B39	B39
40	20	Pink	Red		A40	A40	80					B40	B40

Standard wiring table(60pin)

Wire No.	Twist No.	Wire Color	Mark Color	Marking	CN1 Pin No.	CN2 Pin No.
1	1	Orange	Red		A1	A1
2		Black	Black		A2	A2
3	2	Gray	Red		A3	A3
4		Black	Black		A4	A4
5	3	White	Red		A5	A5
6		Black	Black		A6	A6
7	4	Yellow	Red		A7	A7
8		Black	Black		A8	A8
9		Black	Black		A9	A9
10	5	Pink	Red		A10	A10
11		Black	Black		A11	A11
12	6	Orange	Red		A12	A12
13		Black	Black		A13	A13
14	7	Gray	Red		A14	A14
15		Black	Black		A15	A15
16	8	White	Red		A16	A16
17		Black	Black		A17	A17
18	9	Yellow	Red		A18	A18
19		Black	Black		A19	A19
20	10	Pink	Red		A20	A20
21		Black	Black		A21	A21
22	11	Orange	Red		A22	A22
23		Black	Black		A23	A23
24	12	Gray	Red		A24	A24
25		Black	Black		A25	A25
26	13	White	Red		A26	A26
27		Black	Black		A27	A27
28	14	Yellow	Red		A28	A28
29		Black	Black		A29	A29
30	15	Pink	Red		A30	A30
31		Black	Black		B1	B1
32	16	Orange	Red		B2	B2
33		Black	Black		B3	B3
34	17	Gray	Red		B4	B4
35		Black	Black		B5	B5
36	18	White	Red		B6	B6
37		Black	Black		B7	B7
38	19	Yellow	Red		B8	B8
39		Black	Black		B9	B9
40	20	Pink	Red		B10	B10
41		Black	Black		B11	B11
42	21	Orange	Red		B12	B12
43		Black	Black		B13	B13
44	22	Gray	Red		B14	B14
45		Black	Black		B15	B15
46	23	White	Red		B16	B16
47		Black	Black		B17	B17
48	24	Yellow	Red		B18	B18
49		Black	Black		B19	B19
50	25	Pink	Red		B20	B20
51		Black	Black		B21	B21
52	26	Orange	Red		B22	B22
53		Black	Black		B23	B23
54	27	Gray	Red		B24	B24
55		Black	Black		B25	B25
56	28	White	Red		B26	B26
57		Black	Black		B27	B27
58	29	Yellow	Red		B28	B28
59		Black	Black		B29	B29
60	30	Pink	Red		B30	B30
61		Black	Black			
62	31	Orange	Red		B1	B1
63		Black	Black		B2	B2
64	32	Gray	Red		B3	B3
65		Black	Black		B4	B4
66	33	White	Red		B5	B5
67		Black	Black		B6	B6
68	34	Yellow	Red		B7	B7

Standard wiring table(68pin)

Wire No.	Twist No.	Wire Color	Mark Color	Marking	CN1 Pin No.	CN2 Pin No.
1	1	Orange	Red		A1	A1
2		Black	Black		A2	A2
3	2	Gray	Red		A3	A3
4		Black	Black		A4	A4
5	3	White	Red		A5	A5
6		Black	Black		A6	A6
7	4	Yellow	Red		A7	A7
8		Black	Black		A8	A8
9		Black	Black		A9	A9
10	5	Pink	Red		A10	A10
11		Black	Black		A11	A11
12	6	Orange	Red		A12	A12
13		Black	Black		A13	A13
14	7	Gray	Red		A14	A14
15		Black	Black		A15	A15
1						

<p>■ CA-10-1 Cable assembly base for discrete wire</p>  <p>Base for use with pusher and combs</p>	<p>■ CA-10-2 Pusher</p>  <p>For pressing discrete wires in CA-10-3 and CA-10-4 comb.</p>	<p>■ CA-10-4(for $\phi 0.62$)Comb</p>  <p>Aligns discrete wires in cover of the connector</p>	<p>■ CA-30 Cable assembly base for laminated wire</p>  <p>Press laminated cable into the cover of the connector.</p>
<p>■ LF-30-1 Locating Fixture</p>  <p>Terminates 8840/55 to laminated or discrete wire.</p>	<p>■ LF-30-2 Guide</p>  <p>Positions 8840 for termination</p>	<p>■ LF-30-3 Guide</p>  <p>Positions 8855 for termination</p>	<p>■ LF-30-4 Seating platen</p>  <p>Applies pressure for termination of 8840/55</p>

■ Assembly tool combination

Series		Jig	Hand press	Cable assembly base	Pusher	Comb	Locating fixture	Guide	Seating platen	Option
8840 Series (Receptacle)	Discrete wire cable		HP-12	CA-10-1	CA-10-2	CA-10-4($\phi 0.62$)	LF-30-1	LF-30-2	LF-30-4	ST-10 Sliding base
	Laminated cable	Cable assembly base for laminated wire CA-30								
8855 Series (Cable plug)	Discrete wire cable			CA-10-A	CA-10-2	CA-10-4($\phi 0.62$)	LF-30-3			
	Laminated cable	Cable assembly base for laminated wire CA-30								

(Notice)When you want to use discrete wire, you need the additional cable cutter (CT-14)


OPTIONAL TOOLING

■ HP-12 Hand press



■ ST 10 Sliding base

Sliding base increases output for all types of 8840/55 assemblies, and can be used with all assembly tooling in HP-12 press.



Specifications and dimensions are subject to change without notice.